

Report for: Head of Highways and Parking in consultation with Cabinet Member for Tackling Inequality and Resident Services

Title: Clarendon Road Red Route

Report authorised by: Simi Shah, Group Engineer Traffic and Parking
simi.shah@haringey.gov.uk

Report Author/s: Carlos Munoz, Project Engineer Parking Schemes
Andrew Bourke, Parking Schemes Manager
carlos.munoz@haringey.gov.uk ; andrew.bourke@haringey.gov.uk

Ward(s) affected: Noel Park

Report for Key/Non-Key Decision: Non-key decision

1 Describe the issue under consideration

- 1.1 This report sets out the results of the public engagement undertaken on proposals to introduce Red Route restrictions along the whole length of Clarendon Road N8, which can be enforced via CCTV camera. Proposals would provide enhanced enforcement along with revised parking arrangements that provided additional parking spaces for loading and improvements to existing parking arrangements.

2 Cabinet Member Introduction

- 2.1 N/A

3 Recommendations

- 3.1 It is recommended that that the Head of Service for Highways and Parking in consultation with the Cabinet Member for Tackling Inequality and Resident Services.
- a) Note the results of public engagement undertaken for the proposed introduction of a Red Route in Clarendon Road N8.
 - b) Agree not to progress the introduction of the red route controls and associated changes to parking arrangement in Clarendon Road N8

4 Reasons for decisions

- 4.1 The Council adopted a formal parking policy in March 2020. This requires the Council to consider the results of public engagements conducted on proposed new parking arrangement, prior to making a decision whether or not to proceed to implementation. This policy sets a minimum threshold for response rates of 10% for consultation, as well as requiring at least 51% support for proposals from those who do respond.
- 4.2 Analysis of the results of the public consultation undertaken on the proposals to implement a new Red Route in Clarendon Road N8 indicates a 9% response rate which falls short of the 10% threshold required. In addition, the majority of those responding do not support any of the proposals. Therefore, no changes are recommended.

5 Alternative options considered

- 5.1 Considering the number of requests received from residents prior to Covid 19 to increase parking controls on Clarendon Road N8. The parking team conducted a video traffic survey to understand the level of infringement of parking restrictions and on footways for a potential parking scheme in Clarendon Road N8. Results of this surveys shows a significant change in parking violations after Covid 19 with no infringements being recorded during the duration of the surveys which were commissioned to take place whilst events were taking place at local community centres.
- 5.2 Taking into consideration the results of the public engagement and video survey, the option to implement a red route in Clarendon Road N8 was not progressed.

6 Background Information

- 6.1 Clarendon Road has been experiencing serious illegal parking problems for the last few years. The West Indian Cultural and The England Alevi Cultural Centres are located in the south side of Clarendon Road, attracting a high number of visitors during their event days. This tended to result in inconsiderate and illegal parking causing obstructions Clarendon Road.

A drawing showing the full extent of the proposed Red Route area is attached in Appendix (I)

- 6.2 In recent years **Haringey's Parking** team received a number of complaints from residents and businesses regarding road safety issues resulting from people parking too close to the junctions, blocking access and reports of anti-social behaviour. This created issues with sightlines where drivers cannot see pedestrians waiting to cross the road and creates congestion close to junctions.
- 6.3 Clarendon Road is a two-lane residential road located within the Wood Green (WG) controlled parking zone with controlled hours Monday to Sunday 8 am to 10 pm, parking places are provided. The majority of parking is for resident permit holders, with some shared use parking that is also mainly used by residents with valid permits.

Public Engagement.

- 6.4 The public engagement was carried out over a three-week period starting on 21 November 2021 with closing date of 13 December 2021. The usual parking consultation practice was followed, which involved delivering a consultation pack including information letters, questionnaire, and an area plan to all registered properties within the consultation area. Street notices were erected in every road being consulted to raise awareness of the parking consultation. Also, all consultation material and relevant information was uploaded onto the Council's website with access to an online

questionnaire allowing responses to be submitted digitally. The public engagement (consultation) letter and questionnaire are provided in Appendix (II).

Responses to Consultation.

- 6.5 Of the 155 registered properties that were consulted, the Council received 14 responses. This represented a response rate of 9%, which falls short of the minimum threshold of **10% set out in the Council's Parking Policy**.
- 6.6 **Of the 14 who responded to the question 'Do you support the introduction of a Red Route in Clarendon Road N8, 79% (11) did not support the proposed measures being introduced.**
- 6.7 A copy of the full analysis report has been attached in Appendix (III).

7 Contribution to strategic outcomes

- 7.1 It is important that safe, green travel is available to **prevent the borough's roads from** being overrun by cars and to support active travel, an ambition the Council has laid out in its Transport Strategy. Parking measures to mitigate contraventions support the objectives set out in these documents, as well as the wider initiatives to improve air quality and support the health of residents, as in the Council's Climate Change Action Plan.

Statutory Officers' comments

8 Comments of the Chief Financial Officer

- 8.1 This report seeks Head of Highways and Parking approval not to introduce a Red Route in Clarendon Road N8. There are therefore no financial impact.

9 Comments of the Head of Legal Services and Governance

- 9.1 Before reaching a decision on whether to make a traffic management order to implement a Parking scheme, the Council must follow the statutory consultation procedures pursuant to the Road Traffic Regulation Act 1984 (as amended) ("RTRA") and the Local Authorities' Traffic Orders (Procedure) (England and Wales) Regulations 1996 (as amended) ("the Regulations"). **All representations received must be properly considered in the light of administrative law principles, human rights law and the relevant statutory powers. Any decision must be taken in accordance with the requirements of the Council's CPZ policy (Appendix I).**
- 9.2 The legal position in relation to traffic management orders and the statutory requirements in respect of consultation are set out in section 9.1 of this report. Public consultation has been undertaken and due consideration given to representations by the public. **The recommendations within this report are in line with the requirements of the Council's Parking policy, therefore the Council should be acting lawfully were it to proceed in compliance with the recommendations in this report**

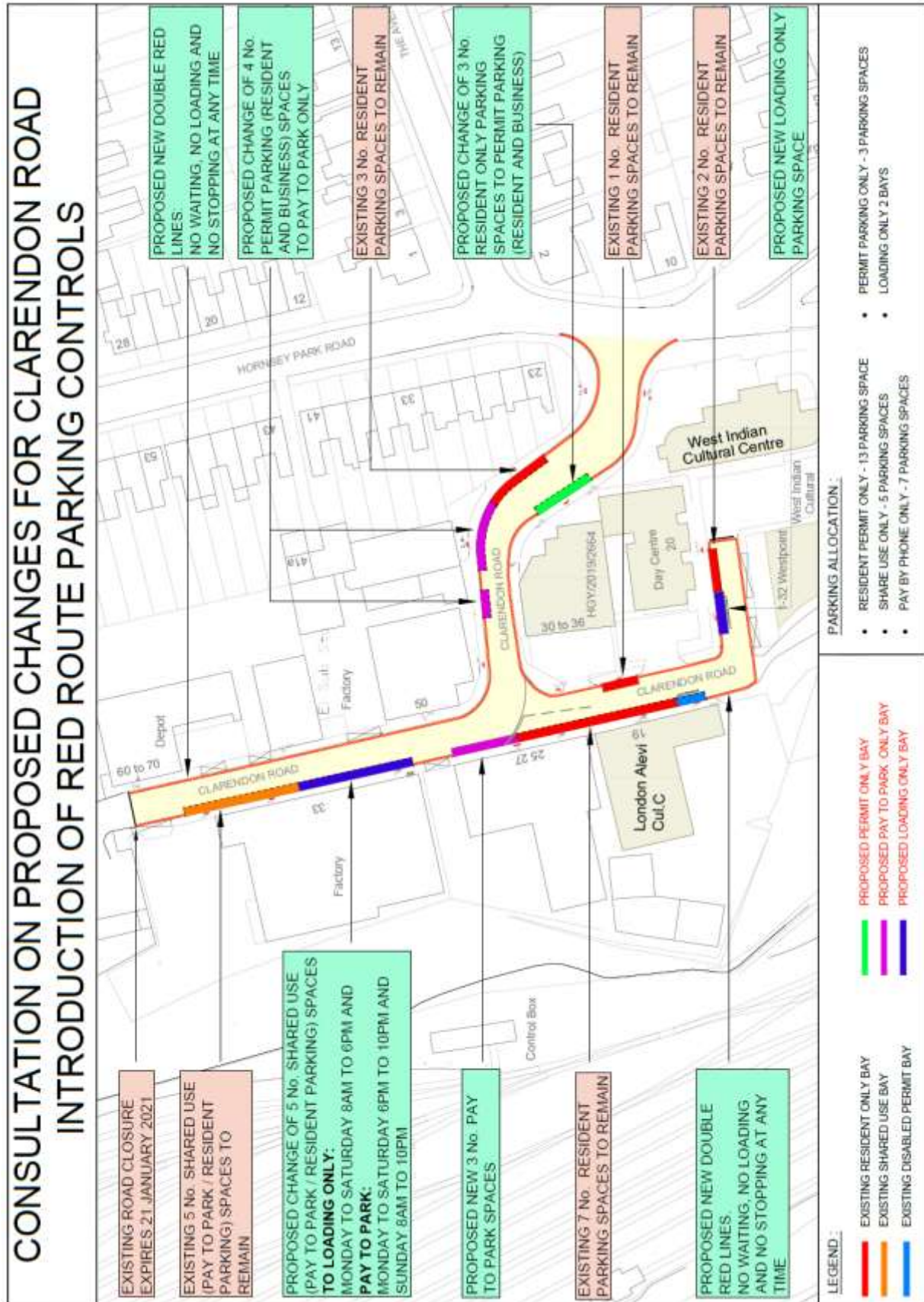
10 Equalities Comments

- 10.1 The Council has a Public Sector Equality Duty under the Equality Act (2010) to have due regard to the need to:
- Eliminate discrimination, harassment and victimisation and any other conduct prohibited under the Act
 - Advance equality of opportunity between people who share those protected characteristics and people who do not

- Foster good relations between people who share those characteristics and people who do not.
- 10.2 The three parts of the duty applies to the following protected characteristics: age, disability, gender reassignment, pregnancy/maternity, race, religion/faitth, sex and sexual orientation. Marriage and civil partnership status applies to the first part of the duty.
- 10.3 The recommendation is to seek approval to not progress with the proposals at this time due to the lack of support received during the public consultation.
- 10.4 A consultation document and a questionnaire with freepost envelope for returning the questionnaire was distributed to all households and businesses within the consultation area. Street posters were placed in every road consulted and an online version of the consultation material was made available on **Haringey's website**.

11 Use of Appendices

- Appendix I – Plan detailing proposals on Clarendon Road N8
- Appendix II – The public engagement (consultation) letter and questionnaire
- Appendix III – Public Engagement analysis report



Environment and Neighbourhoods

Ann Cunningham: Head of Service for Highways and Parking



22 November 2021

Public consultation for creation of Red Routes on Clarendon Road, N8

Introduction

We are writing to ask for your views on the Council's proposals to make changes to the current parking arrangements and restrictions in Clarendon N8.

Proposed changes

We are proposing to introduce Red Route restrictions which will be enforced via CCTV camera. We are also looking to provide more spaces for loading and changes to parking. These changes if agreed will be implemented under an experimental basis (trial) at the following location:

- Clarendon Road for its entire length from Mary Neuner Road to Hornsey Park Road

The changes are detailed as follows:

- Changing most sections of single and double yellow lines to double red lines. This will create a 'no-stopping' route meaning stopping, waiting or loading will not be allowed at any time on any of the double red lines.
- Changing 5 No. shared use parking spaces to allow Loading Monday to Saturday 8am to 6pm and Pay to Park Monday to Saturday 6pm to 10pm and Sunday 8am to 10pm.
- Introducing 7 No. new pay to park spaces and reducing resident only parking by 3 No. spaces.

Why we are proposing the change

In recent years we have received a number of complaints from residents and businesses regarding road safety issues resulting from people parking too close to the junctions, blocking access and reports of anti-social behaviour. This creates issues with sightlines where drivers cannot see pedestrians waiting to cross the road and creates congestion close to junctions.

The proposed changes are aimed to discourage illegal parking and improve safety.

What is a Red Route

Double red lines are typically seen on the Transport for London (TfL) road network and do not allow any loading, waiting or stopping by motor vehicles. This can be enforced by CCTV cameras and penalty charge notices (fines) issued if a vehicle stops on the double red lines. Since 2016, a change in the law has allowed London boroughs to introduce red routes on their own roads.

Enforcing on yellow lines does not allow the Council to enforce via CCTV and relies on on-street enforcement by officers. Given the level of non-compliance along these roads, we want to introduce red routes here to enforce more effectively.

If approved, the changes will be introduced under a trial basis allowing us time to seek your feedback and assess how it is working before taking a decision on whether to make the changes permanent.

Have your say

We would like to know if you support the changes and feel these will help address your concerns and meet the needs of the area.

Please submit your response to this consultation to reach us no later than **13 December 2021**. You can do this via one of the following three options below:

Online: fill in a questionnaire for Red Route Proposals in Clarendon Road N8 which is found by following this link <https://www.haringey.gov.uk/current-parking-consultations>

Email: fill in the attached questionnaire and email it to frontline.consultation@haringey.gov.uk

Post – fill in your paper copy of the questionnaire and return it to us using the Freepost envelope provided.

Please Note: If you are responding on behalf of an organisation only one reply will be accepted. You must give your full postal address when responding to this consultation if you want us to consider your views.

Other changes on offer

To promote the uptake of electric vehicles we are considering new locations to increase the number of electric vehicle charging points/bays available in the borough. If you would like to request an on-street charging point, then please provide your address and the suggested location under Q6 within the questionnaire.

Dedicated disabled parking bays (those that can only be used by one vehicle registration) are one of the benefits being offered by the Council to help residents with severe walking impairments and those residents who cannot travel far to their vehicle. The bays are intended to provide the eligible residents easy access to and from their homes and ensuring there is sufficient room to manoeuvre in and out of their vehicle. For full details on dedicated disabled parking places and how to apply online please visit <https://www.haringey.gov.uk/parking-roads-and-travel/parking/dedicated-disabled-parking-bay>.

If however you do not have access to the internet, you can request a dedicated disabled parking bay under Q7 within the questionnaire.

What happens next?

- **December 2021:** Council Officers will consider your feedback and discuss the outcome of the consultation with your ward councilors.
- **January 2022:** Officers will prepare a report with recommendations which will be submitted for a decision to a key officer in consultation with the relevant Cabinet Member.
- **January/February 2022:** We will write to you to update you on the outcome of the consultation and decision.
- **February/March 2022:** If approved, the changes will be made on the streets concerned under an experimental traffic management order an enforced.

With thanks for your attention, we look forward to hearing from you.

Red Route proposals Questionnaire

Clarendon Road N8,

Q1 Please tell us your road name and house number.

Personal details will not be published, but we need the information for our analysis. Under the Local Government Access to Information Act 1985, your consultation response will be available for inspection if required; however, your personal details will remain confidential.

Q2 Are you a Resident, Business or Residents Group?

☐

Resident

☐

Business

☐

Residents Group

If a Residents Group, please provide details and number of registered members.

Q3 Is it difficult to find parking space in your road?

☐

Yes

☐

No

☐

Sometimes

Q4 Do you support the introduction of Red Routes including changes to parking places in Clarendon Road?

☐

Yes

☐

No

Q5 If you do not support the proposed changes, please explain why.

Q6 If you would like an electric vehicle charging point (EVCP), please enter your name and address in the space below.

Q7 If you are a disabled blue badge owner and want to request converting a general disabled parking bay into a dedicated disabled parking bay (for your use only for which we will provide a unique bay number) or a new Dedicated Disabled Parking Bay, please tick the 'yes' box below and enter your name and address. We will then send you an application form.

☐

Yes

If yes, please enter your full name and address.

Q8

Please use this space for any comments you want to make including details of an alternative proposal which you feel will work better.



Consultation Analysis



Clarendon Road Red Route

		Count	%
Are you a Resident, Business or Residents Group? - Resident	Resident	10	71%
	Business	4	29%
	Residents Group	0	0%
	Total	14	100%

NB. Respondents do not understand what is meant by 'Residents Group'

		Count	%
Do you support the introduction of Red Routes - including...	Yes	3	21%
	No	11	79%
	Total	14	100%

		Do you support the introduction of Red Routes - including...	
		Yes Count	No Count
Road name and house number	10 Westpoint apartment	0	1
	19 Clarendon Road	0	1
	37 Greyhound Road	0	1
	50A Clarendon Road	0	1
	9 Clarendon Road	0	1
	ACLC - Cultural Centre	0	1
	Clarendon Rd (6 West Point Apartments)	0	1
	Clarendon Rd (43 Westpoint Appts)	1	0
	Clarendon Rd (West Point Apartments)	1	0
	Clarendon Rd 50a	0	1
	Clarendon Rd 59	1	0
	Clarendon Rd 9, African Caribbean Leadership Co Ltd.	0	1
	Clarendon Rd Westpoint Appts	0	1
	Clarendon Rd, 42 Westpoint Apartments	0	1

Frontline.consultation@haringey.gov.uk

		Is it difficult to find parking space in your road?		
		Yes Count	No Count	Sometimes Count
Road name and house number	10 Westpoint apartment	1	0	0
	19 Clarendon Road	1	0	0
	37 Greyhound Road	1	0	0
	50A Clarendon Road	1	0	0
	9 Clarendon Road	1	0	0
	ACLC - Cultural Centre	0	0	1
	Clarendon Rd (6 West Point Apartments)	0	0	1
	Clarendon Rd (43 Westpoint Apts)	1	0	0
	Clarendon Rd (West Point Apartments)	1	0	0
	Clarendon Rd 50a	0	0	1
	Clarendon Rd 59	1	0	0
	Clarendon Rd 9 - African Caribbean Leadership Co Ltd	1	0	0
	Clarendon Rd Westpoint Apts	1	0	0
	Clarendon Rd, 42 Westpoint Apartments	1	0	0
	Total	11	0	3